



Description

General Purpose Liquid-Filled Pressure Gauges are designed for pressure measurements in different industrial applications where high accuracy is not needed. General Purpose Liquid-Filled Pressure Gauges have various case designs and wide pressure measurement range and are all compatible with process fluids that do not attack copper alloys. The filling liquid used in the products lessens the effects of high dynamic pressure loads and vibration to the pressure gauge.

Industrial Applications

Water&Waste-Water treatment plants, machine building, HVAC systems, hydraulic and pneumatics, process lines

General Specifications

Conformity:

EN 837-1

Gauge Sizes (mm):

Ø40, Ø50, Ø63, Ø100, Ø160

Unit:

bar/psi

Measurement Ranges:

Ø40 : -1/0, 0/1...400 bar (-15/0, 0/15..6000 psi)

Ø50, Ø63, Ø100, Ø160: -1/0, 0/0,6...600 bar

-15/0, 0/9...9000 psi

Equivalent compound gauge scales

Accuracy Class:

CL 2,5 (Ø40, Ø50, Ø63, Ø100)

CL1,6 (Ø50, Ø63, Ø100, Ø160)

Working Pressure:

75% of Full Scale

Overpressure Resistance:

1.25xFull Scale (Up to 100 bar)

1.15xFull Scale (From 100 bar to 600 bar)

1.1xFull Scale (Over 600 bar)

Ingress Protection Rate:

IP67 (Ø40mm), IP65

Versions:

Fillable

Liquid-Filled : Glycerin (Optional: Silicone Oil)

Working Temperature Range:

Ambient: -20°C...60°C

Process: -20°C...60°C

Process Connections:

Ø40 : G1/8"B

Ø50, Ø63 : G1/4"B

Ø100, Ø160 : G1/2"B

Materials:

Bourdon Tube:

Copper Alloy

Socket:

Brass

Case:

AISI 304

Cover:

AISI 304

Movement:

Brass

Window:

Ø40, Ø100: Polycarbonate

Ø50, Ø63: Acrylic

Ø160: Safety Glass

Dial:

Aluminium

Pointer:

Ø40, Ø50, Ø63, Ø100: Plastic

Ø160: Aluminium

Ø50, Ø63, Ø100: Aluminium (Optional)

Options:

Other Process Connections

Other Pressure Units

Special Dial Design

Silver Brazed

Coated Pressure Sensing Element

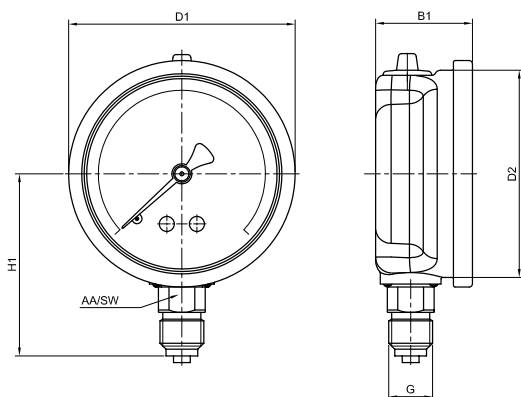
Nitrogen (N) Dial

Oxygen (O) Dial

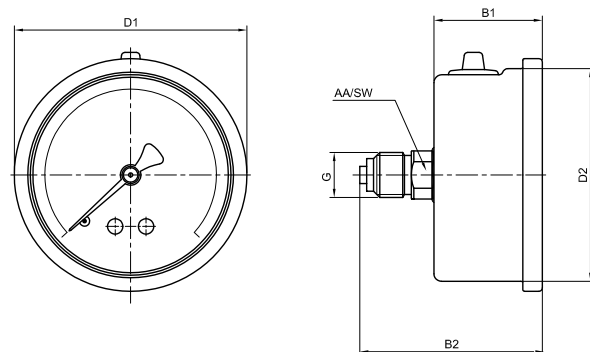
Argon (Ar) Dial

Dimensions (mm)

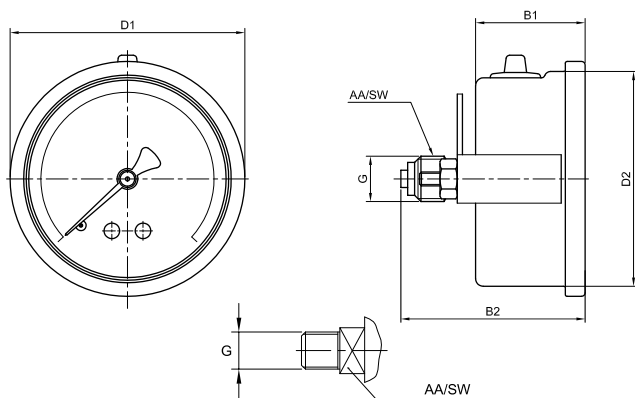
01-Bottom Connection



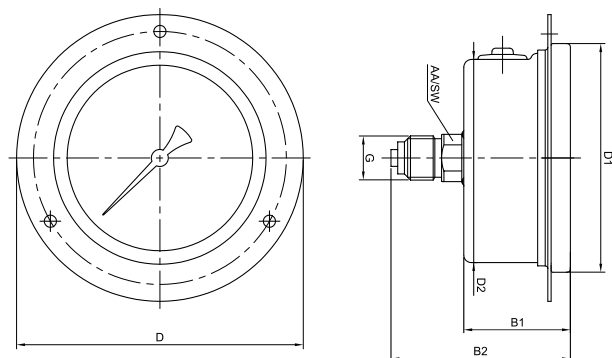
02-Back Connection



03-Back Connection Panel Mount



04-Back Connection Front Flange



Ø	Connections	Version	Case	Window	Cover	D	D1	D2	B1	B2	H	G	SW
Ø40	Back	Standard	Metal	Plastic	Metal	-	43	39	25.7	48.7	-	G1/8"	15
Ø50	Bottom	Standard	Metal	Plastic	Metal	-	56.5	50	28.5	-	41	G1/4"	15
	Back	Standard	Metal	Plastic	Metal	-	56.5	50	28.5	58	-	G1/4"	15
Ø63	Back Panel Mount	Standard	Metal	Plastic	Metal	-	56.5	50	28.5	58	-	G1/4"	15
	Bottom	Standard	Metal	Plastic	Metal	-	68	62	30.5	-	54.5	G1/4"	14
	Back	Standard	Metal	Plastic	Metal	-	68	62	31.5	53.5	-	G1/4"	14
	Back Panel Mount	Standard	Metal	Plastic	Metal	-	68	62	31.5	53.5	-	G1/4"	14
Ø100	Back, Front Flange	Standard	Metal	Plastic	Metal	85	68	62	31.6	53.2	-	G1/4"	14
	Bottom	Standard	Metal	Plastic	Metal	-	106	98,8	34	-	84	G1/2"	22
	Back	Standard	Metal	Plastic	Metal	-	106	98,8	31	65.8	-	G1/2"	22
	Back Panel Mount	Standard	Metal	Plastic	Metal	-	106	98,8	31	65.8	-	G1/2"	22
Ø160	Back, Front Flange	Standard	Metal	Glass	Metal	132	106	98,8	31	65,8	-	G1/2"	22
	Bottom	Standard	Metal	Glass	Metal	-	169	158	35.5	-	113	G1/2"	22

Approvals:



Turkish Standards Institution



ISO 9001 Quality Management System



TURKAK Calibration Laboratory Accreditation Certificate



2014/68/EU Pressure Equipment Directive - Certificate of Conformity



Gost Certificate

*System and quality certifications of PAKKENS Inc.
Product and product group certifications may vary*