



Description

Accurate Pressure Gauges are designed for pressure measurements in different industrial applications where high accuracy is needed. Accurate pressure gauges have various case designs and wide pressure measurement ranges and are all compatible with process fluids that do not attack Copper Alloys and AISI 316L.

Industrial Applications

Water&Waste-Water treatment plants, machine building, HVAC systems, hydraulic and pneumatics, process lines

General Specifications

Confirmity:

EN 837-1

Sizes (mm):

Ø100, Ø160, Ø250

Unit:

bar/psi

Measurement Ranges:

-1/0, 0/0.6...600 bar (-15/0, 0/9...9000 psi)

Equivalent compound gauge scales

Accuracy Class:

CL 1.0

Working Pressure:

75% of Full Scale

Overpressure Resistance:

1.25xFull Scale (Up to 100 bar)

1.15xFull Scale (From 100 bar to 600 bar)

1.1xFull Scale (600 bar)

Ingress Protection Rate:

IP41

Versions:

Standard

Working Temperature Range:

Ambient: -20...60°C

Process: -20...60°C

Process Connections:

G1/2"B

Materials:

Bourdon Tube:

Copper Alloy (Up to 100 bar)

AISI 316L (Over 100 bar)

Socket:

Brass

Case:

Black Painted Metal

Cover:

Black Painted Metal

Movement:

Brass

Stainless Steel (For Ø100 and Ø160, between -1...1.6bar)

Window:

Glass (Optional: Safety Glass)

Dial:

Aluminium

Pointer:

Aluminium

Options:

Other Process Connections

Other Pressure Units

Special Dial Design

Dampened Movement (Vib-Lock)

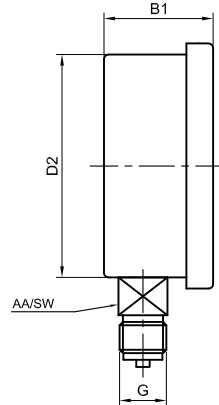
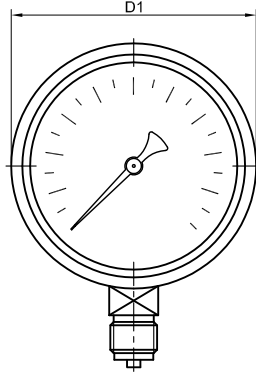
Adjustable Pointer

Silver Brazed (Max Work.Temp. 120°C)

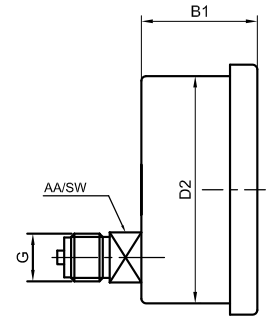
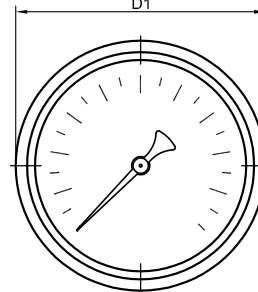
Coated Case and Pressure Sensing Element

Dimensions (mm)

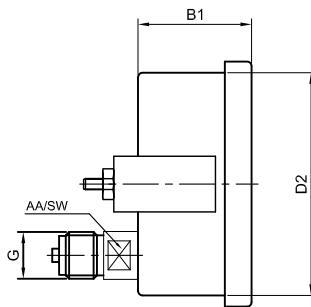
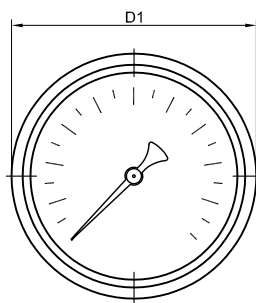
01-Bottom Connection



02-Lower Back



03-Lower Back Panel Mount



Ø	Connections	Version	Case	Window	Cover	D1	D2	B1	G	AA/SW
Ø100	Bottom	Standard	Metal	Glass	Metal	110	100	48	G1/2"	22
	Lower Back	Standard	Metal	Glass	Metal	110	100	48	G1/2"	22
	Lower Back Panel Mount	Standard	Metal	Glass	Metal	110	100	48	G1/2"	22
Ø160	Bottom	Standard	Metal	Glass	Metal	174	158	48	G1/2"	22
Ø250	Bottom	Standard	Metal	Glass	Metal	250	242,8	52	G1/2"	22

Approvals:



Turkish Standards Institution



ISO 9001 Quality Management System



TURKAK Calibration Laboratory Accreditation Certificate



2014/68/EU Pressure Equipment Directive - Certificate of Conformity



Gost Certificate

*System and quality certifications of PAKKENS Inc.
Product and product group certifications may vary*