



### Description:

Single Block and Multiport Needle Valves are used for separating the process from the pressure sensing instruments, such as pressure gauges, pressure transmitters, and pressure switches. The valves are not compatible with the process fluids that are highly viscous, crystallizable, and aggressive. It contains 1 isolation valve and 1 discharge plug. By turning off the isolation valve, the instrument located on the valve can be disassembled for maintenance, calibration, or renewal of it. After closing the isolation valve, the trapped fluid between the valve and the pressure sensing instrument can be safely evacuated by the discharge plug.

### Industrial Applications:

Treatment Systems, Petrochemical plants, Chemical Plants, Petroleum and Natural Gas Transfer Systems.

### General Specifications:

**Max Operating Pressure:**  
413 bar (6000 psi) at 38°C

**Operating Temperature:**  
-54°C/+240°C

**Process Connection/Instrument Connection:**  
1/2"NPT-F / 1/2"NPT-F (MP1012)  
1/2"NPT-M / 1/2"NPT-F (MP1022, MP1052, MP1062)  
1/2"NPT-M / 1/2"NPT-M (MP1032)

**Discharge Connection:**  
1/4"NPT

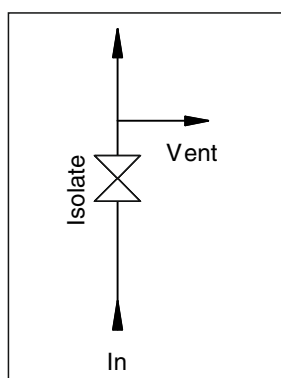
**Bonnet Type:**  
Standard

**Material:**  
**Body:** Stainless Steel AISI 316L  
**Valve Body:** Stainless Steel AISI 316L  
**Bonnet Body:** Stainless Steel AISI 316L  
**Spindle Tip:** Stainless Steel AISI 316L  
**Handle:** Stainless Steel AISI 316L

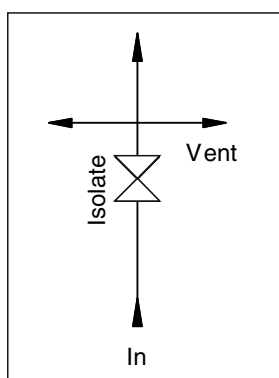
**Gasket:**  
PTFE (Optional: Grapfoil)

### Functional Diagram:

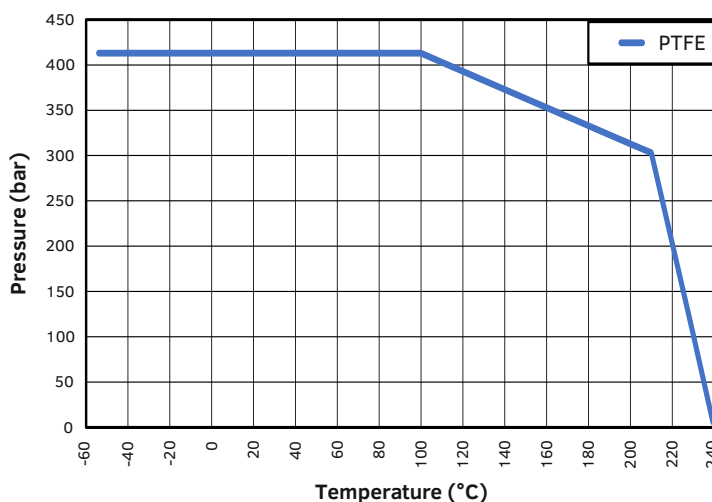
**MP1012, MP1022,  
MP1032**



**MP1052,  
MP1062**

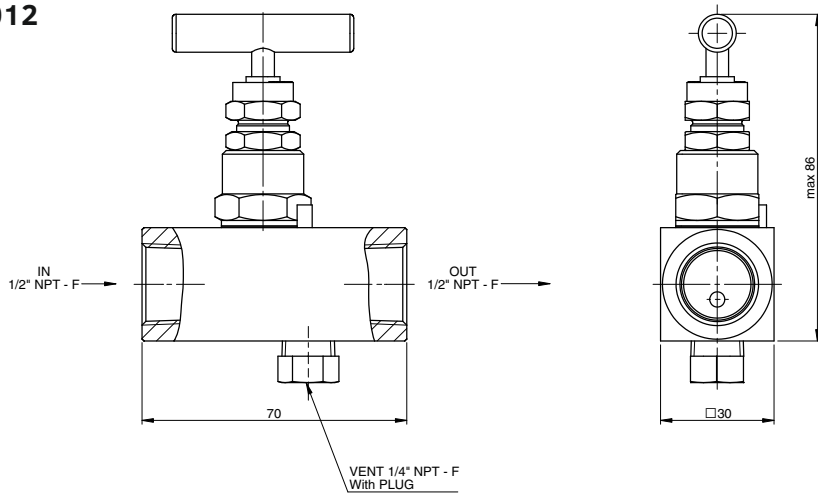


### Operating Pressure & Temperature Range:

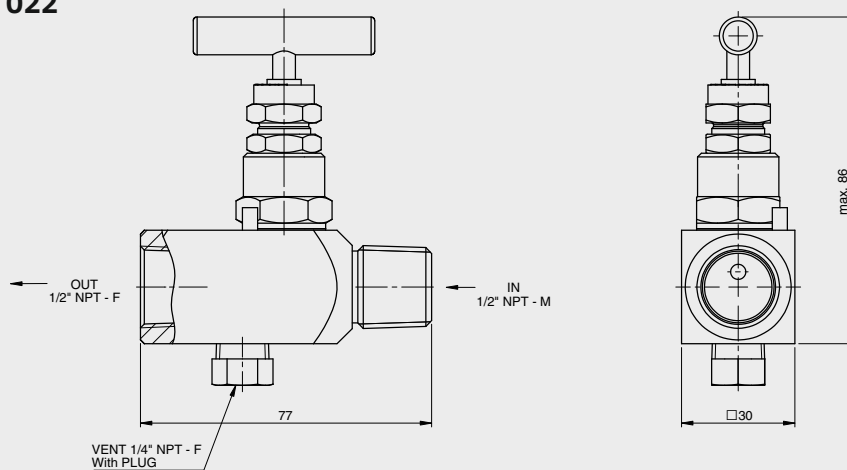


**Dimensions (mm):**

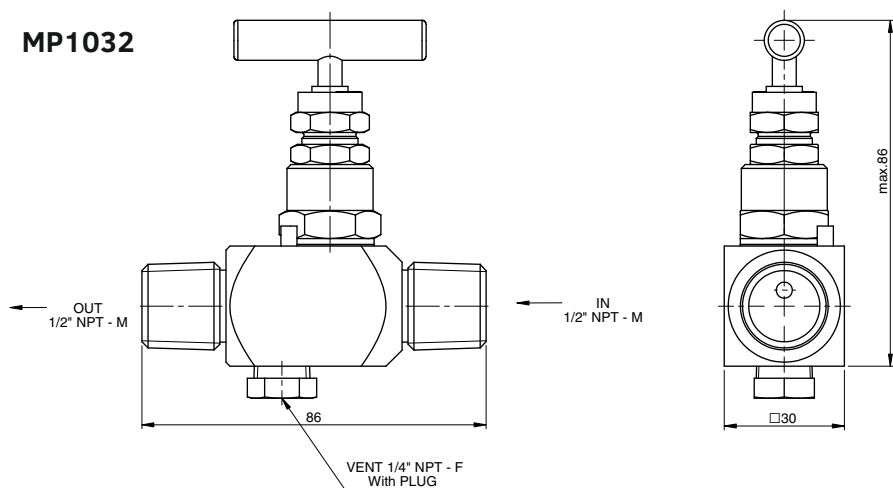
**MP1012**



**MP1022**

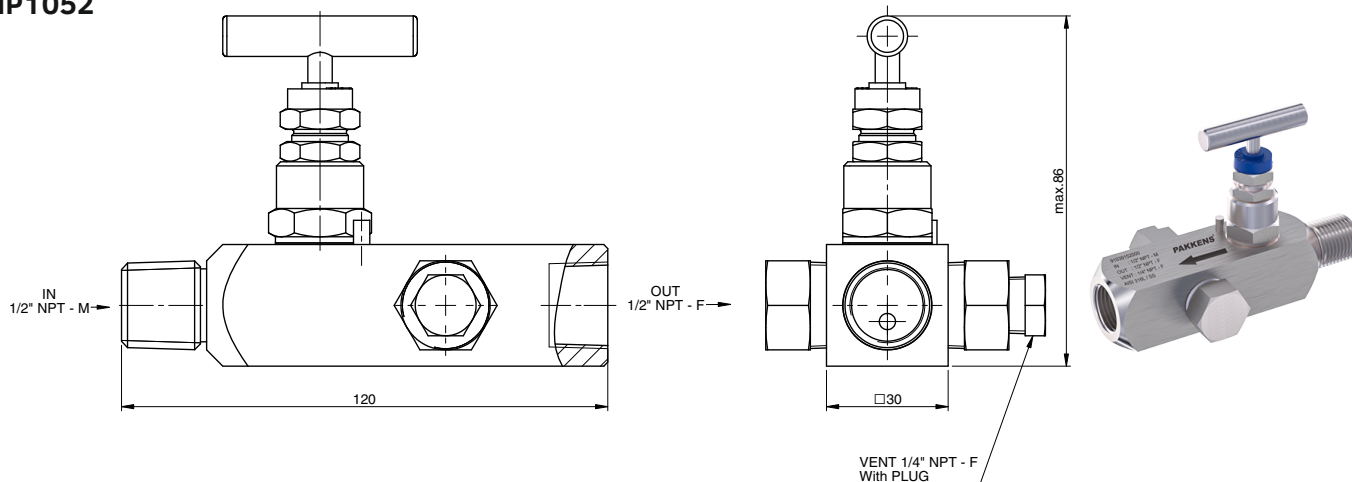


**MP1032**



**Dimensions (mm):**

**MP1052**



**MP1062**

