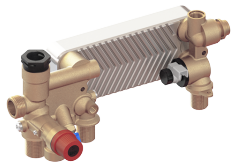


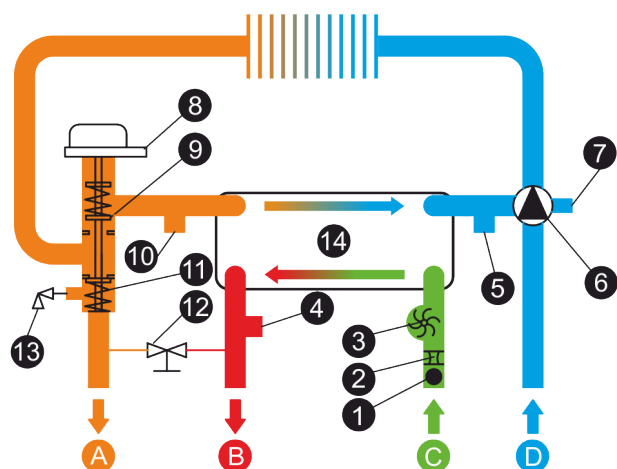
Gruppi idraulici - HB-108



Proprietà Costruttive

Flow Detection	· Turbine Type Flowmeter with Hall Effect Sensor
Pump Connection	· Side
By-Pass Type	· Through PHE
Material	· CuZn40Pb2 (CW617N)
Flow Regulator	· 6 to 22 (lt/min)
Pressure Relief Valve	· 3 bar ½"

Immagine di disegno tecnico - HB-108



- | | |
|--------------------------------|-------------------------|
| 1 DHW Filter | 8 3 Way Valve Motor |
| 2 Flow Regulator | 9 Automatic Bypass |
| 3 Flow Sensor | 10 Pressure Gauge Conn. |
| 4 NTC Sensor Connection | 11 3 Way Valve |
| 5 Pressure Switch/Sensor Conn. | 12 Filling Tap |
| 6 Circulation Pump | 13 Safety Valve |
| 7 Expansion Vessel Connection | 14 Plate Heat Exchanger |

- | | |
|----------------------------|---------------------------|
| A Heating Delivery CH | C Sanitary Water Inlet DW |
| B Sanitary Water Outlet DW | D Heating Return CH |

