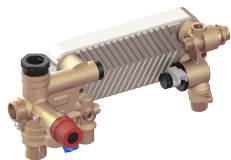


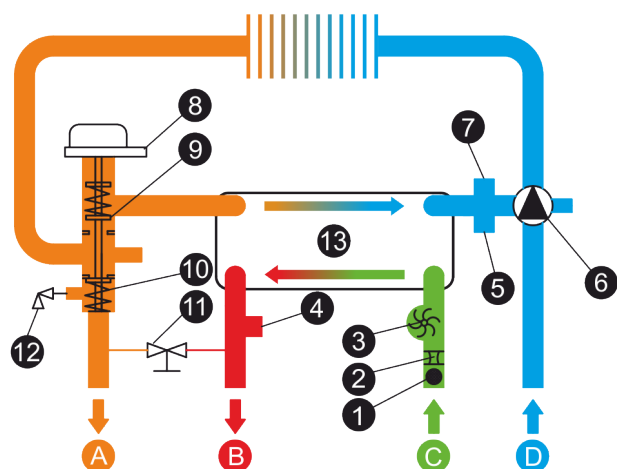
## Gruppi idraulici - HB-105



### Proprietà Costruttive

Flow Detection	· Turbine Type Flowmeter with Hall Effect Sensor
Pump Connection	· Side
By-Pass Type	· Through PHE
Material	· CuZn40Pb2 (CW617N)
Flow Regulator	· 6 to 22 (lt/min)
Pressure Relief Valve	· 3 bar ½"

# Immagine di disegno tecnico - HB-105



- |                                |                         |
|--------------------------------|-------------------------|
| 1 DHW Filter                   | 8 3 Way Valve Motor     |
| 2 Flow Regulator               | 9 Automatic Bypass      |
| 3 Flow Sensor                  | 10 3 Way Valve          |
| 4 NTC Sensor Connection        | 11 Filling Tap          |
| 5 Pressure Switch/Sensor Conn. | 12 Safety Valve         |
| 6 Circulation Pump             | 13 Plate Heat Exchanger |
| 7 Expansion Vessel Connection  |                         |

- |                            |                           |
|----------------------------|---------------------------|
| A Heating Delivery CH      | C Sanitary Water Inlet DW |
| B Sanitary Water Outlet DW | D Heating Return CH       |

