



Pressure Gauges - MG 160

- Used where no high accuracy is needed.
- Used for measuring liquid and gases which are suitable to copper alloys.
- Liquid filled types are used with pulsating pressures or vibrating environments.

Industry Sector: Water treatment technologies, Machinery Manufacturing, Heating, ventilation, air conditioning (HVAC), Pumps/Compressors and Hydraulic/Pneumatics,



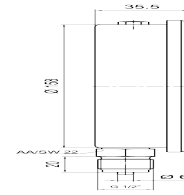
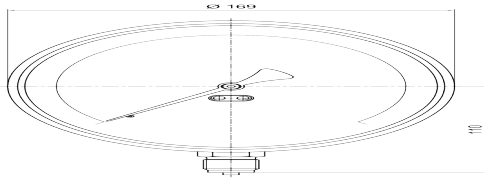
Usage Properties

Operating Pressure (max.)	· Must not exceed %75' of full scale.
Conformity	· EN 837 - 1
Accuracy Class	· CL 1.6
Ambient Temperature	· - 20 ... + 60 °C
Protection Rate	· IP 65
Mechanical Vibration Test	· 10Hz-150Hz 1 Octave/minute - 3 axis
Mechanical Shock Test Load	· 15g
Optimum Operating Range	· Between 0,1 x PN and 0,75 x PN
Over Pressure Limit	· ≤ 40 bar PN x 1.25
Fluid Temperature	· Maximum + 60 °C
Storage Temperature	· -40 ... +70 °C

Constructive Properties

Mounting Type	· Bottom Connection
Scale Unit	· bar/psi
Scale Range (PN)	· 0/2,5 · 0/4 · 0/6 · 0/10 · 0/16 · 0/25 · 0/40 · 0/60 · 0/100 · 0/160 · 0/250 · 0 - 315 · 0/400 · 0/600
Case	· Stainless Steel AISI-304
Movement	· Brass
Window	· Safety Glass
Wetted Parts	· Copper Alloy
Connection	· G 1/2" B
Dial	· Aluminum
Pointer	· Aluminum
Welding	· Soldering
Filling Liquid	· Glycerine

Technical Drawings - MG 160



160 100 11 /