



710 01 11 00

## Pressure Sensors - MPS-10

PAKKENS MPS-10 Pressure Transmitter has been developed for accurate measurements various industrial applications. The wide measurement range, commonly used signal output, high resistance to overpressure, and low nonlinearity value make it a reliable and robust product for the pressure measurement of fluids that do not attack Ceramic and AISI 316L.

- Used with gas and liquids which do not attack stainless steel 316L.
- For aggressive medias diaphragm separated types made of Hastelloy C276 or Monel4 can be used
- Output Signal can be transferred via cable up to 100meters.
- Can withstand higher rate of overpressure
- Long operating life thanks to its monolithic sensor

Industry Sector: Process control, Industrial robots, Machinery Manufacturing, Pumps/Compressors, Hydraulic/Pneumatics, Water treatment technologies and Heating ventilation, air conditioning (HVAC).



### Usage Properties

Conformity	· EN 837 - 1
Accuracy Class	· $\leq \pm 0,5 \% \text{ FS}(-25/+85^{\circ}\text{C}) \leq \pm 1,0 \% \text{ FS}(+85^{\circ}\text{C}/+125^{\circ}\text{C})$
Protection Rate	· IP 55
Storage Temperature	· - 20 ... + 70 °C

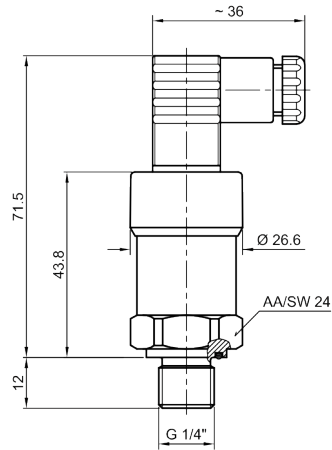
### Constructive Properties

Mounting Type	· Bottom Connection
Scale Unit	· bar
Scale Range (PN)	· 0/0,5 · 0/1 · 0/1,6 · 0/2,5 · 0/4 · 0/6 · 0/10 · 0/16 · 0/25 · 0/40 · 0/60 · 0/100 · 0/160 · 0/250 · 0 - 315 · 0/400 · 0/600
Connection	· G 1/4" B
Output Type	· Current Loop
Output Range	· 4 - 20 mA
Voltage Supply	· 9 .. 35 V DC
Measuring Method	· Relative
Response Time	· $\leq 5 \text{ ms}$
Current Consumption	· < 30 mA
Connector	· DIN 43650-A
Reverse Polarity Protection	· Built - in
Service Life	· 10.000.000- Cycles
Max.Length of Cable	· 100 meters
Sensor Type	· Monolithic / Ceramic

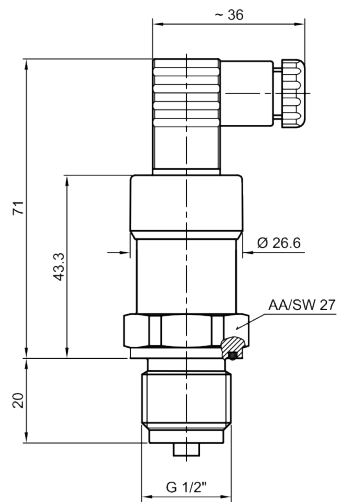
**Constructive Properties**

Free Fall Resistance	· h:1m to concrete surface
Resistance to Shock	· 50g
Vibration Resistance	· 20g
Long term Drift	· $\leq \pm 0,3$ % FS/year (0 Mio Cycles 100% pressure @ 25°C)
RoHS Compliance	· Yes

**Technical Drawings - MPS-10**



710 0111 00 /



710 0111 01 /