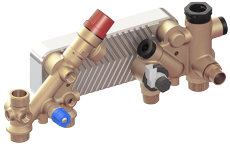


## Hydraulic Groups - HB-120



Fully brass hydraulic group with front pump connection, designed for combi type heating devices.

Compatible with all circulation pump make and models, and suitable to be used with on off and stepper type 3WV actuators.

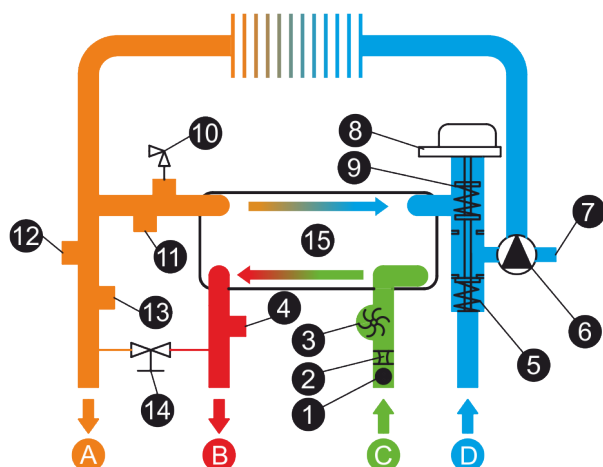
Standard content of delivery includes flow and return blocks with DHW filter, flow regulator as per customer request, radial type turbine flow meter with Hall effect sensor, manual filling tap, 3WV cartridge, brass or plastic 3 bar ½" pressure relief valve, ½" and ¾" brass connection nipples.

The hydraulic set could be customized and provided with a plate heat exchanger, 3WV motor, pressure switch or sensor and NTC sensor upon customer request.

### Constructive Properties

Flow Detection	· Turbine Type Flowmeter with Hall Effect Sensor
Pump Connection	· Front
By-Pass Type	· Through PHE
Material	· CuZn40Pb2 (CW617N)
Flow Regulator	· 6 to 22 (lt/min)
Pressure Relief Valve	· 3 bar ½"

# Technical Drawings - HB-120



- |                               |                                      |
|-------------------------------|--------------------------------------|
| 1 DHW Filter                  | 9 Automatic Bypass                   |
| 2 Flow Regulator              | 10 Safety Valve                      |
| 3 Flow Sensor                 | 11 Pressure Switch Sensor Connection |
| 4 NTC Sensor Connection       | 12 Heating Temp. Sensor Con.         |
| 5 3 Way Valve                 | 13 Drain Valve                       |
| 6 Circulation Pump            | 14 Filling Tap                       |
| 7 Expansion Vessel Connection | 15 Plate Heat Exchanger              |
| 8 3 Way Valve Motor           |                                      |
- 
- |                            |                           |
|----------------------------|---------------------------|
| A Heating Delivery CH      | C Sanitary Water Inlet DW |
| B Sanitary Water Outlet DW | D Heating Return CH       |

