

Pressure Accessories - 5 way Manifold



Designed to allow access to all ways in a single compact body with optimum ease of operation. The basic 5 way manifold consists of two pressure isolation valves, two integ drain/vent valves for purging and one equalizing valve. 5-way valve manifold is also used for differential pressure instruments and transmitters.

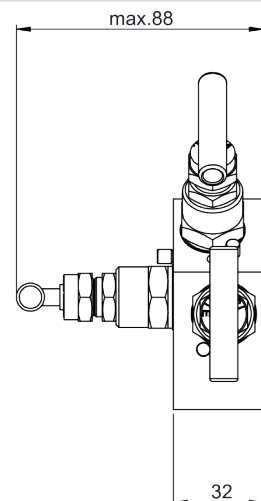
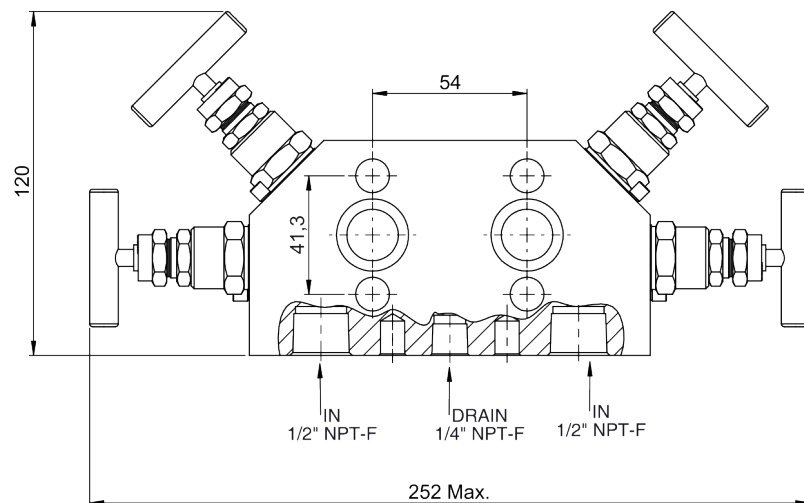
Usage Properties

Operating Pressure (max.) · 6000 psi/413 bar

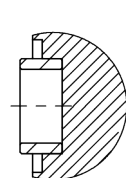
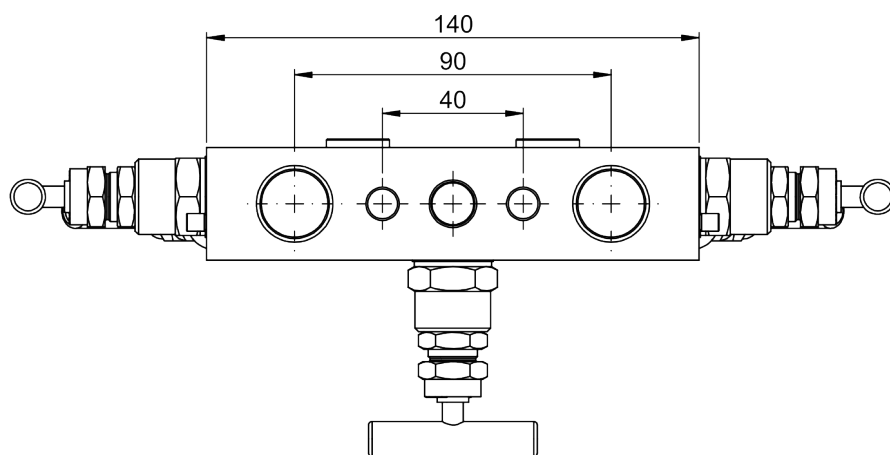
Constructive Properties

Mounting Type	· Vertical
Case	· Stainless Steel AISI-316L
Inlet Connections	· 1/2" NPT
Outlet Connections	· Flanged
Knob	· Stainless Steel AISI-316L
Gasket	· PTFE

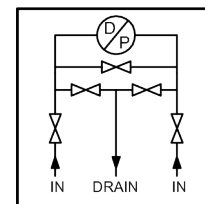
Technical Drawings - 5 way Manifold



MP5W552 /



OUT: Flanged
IEC 61518
type A



MP5W552 /