

Pressure Accessories - 3 way Manifold



Designed for use in conjunction with differential pressure instruments and transmitters. The basic three way manifold consists of two process isolation valves and one equalizing valve in a single compact unit.

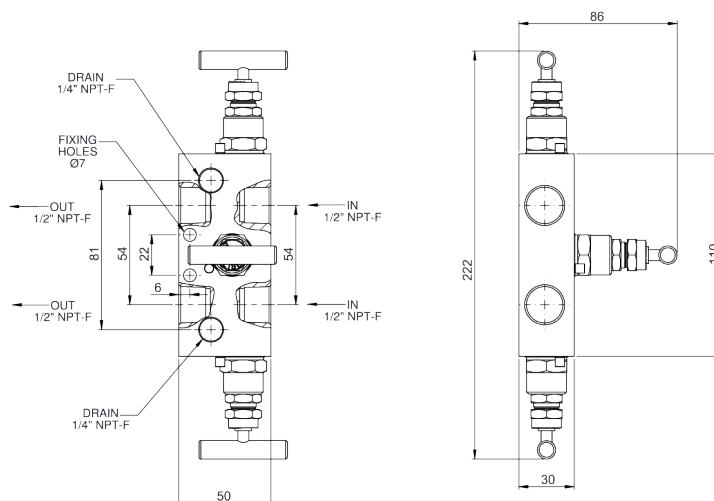
Usage Properties

Operating Pressure (max.) · 6000 psi/413 bar

Constructive Properties

Mounting Type	· Vertical
Case	· Stainless Steel AISI-316L
Inlet Connections	· 1/2" NPT
Outlet Connections	· 1/2" NPT
Knob	· Stainless Steel AISI-316L
Gasket	· PTFE

Technical Drawings - 3 way Manifold



MP3W312 /