



Pressure Accessories - 2 way Manifold

The basic valve consists of two valves in a integral unit for isolation and Drain/calibratic of pressure gauges, pressure switches, pressure transmitters. Designed to reduce installation costs and improve safety performance, the consolidation of valves into one unit provides you with a combination of instrument isolation together with bleed/vent a test facilities. Closing the isolation valves and operating the bleed valve gives operators the opportunity of venting trapped pressurized fluids to an environmentally safe area. These manifolds are designed for fast and efficient installation and removal of pressure measurement instruments.

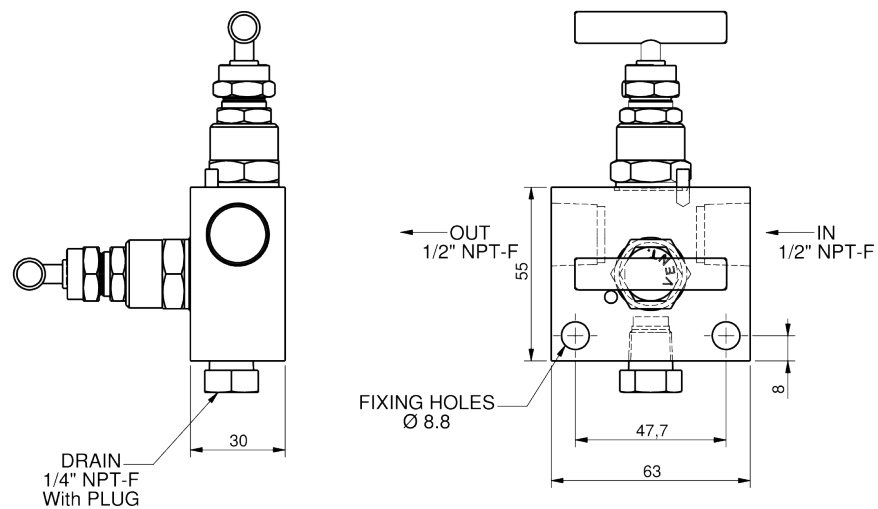
Usage Properties

Operating Pressure (max.) · 6000 psi/413 bar

Constructive Properties

Mounting Type	· Vertical
Case	· Stainless Steel AISI-316L
Inlet Connections	· 1/2" NPT
Outlet Connections	· 1/2" NPT
Knob	· Stainless Steel AISI-316L
Gasket	· PTFE

Technical Drawings - 2 way Manifold



MP2W219 /